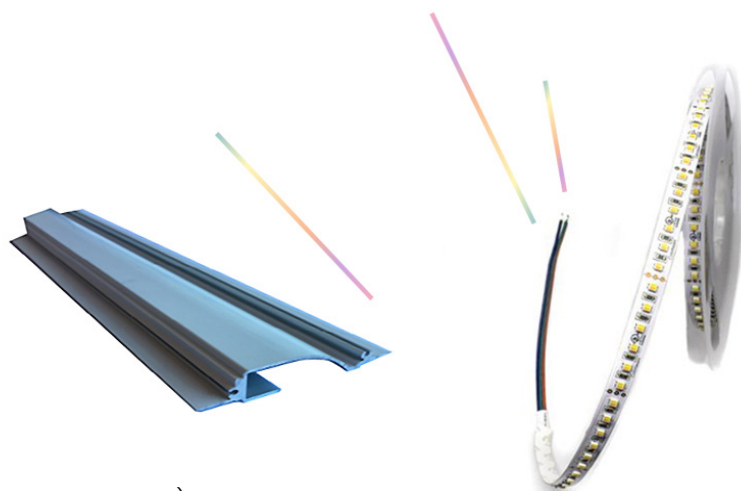


APPLICATIONS:

GIULIA is a very discreet LED tape channel ideal for uniform illumination of ceiling and wall wash. This lamp is ideal for ceiling and wall wash to enhance surface textures and architectural elements

CHARACTERISTICS:

- Plaster-in LED tape channel, requires a minimum 5/8" thick drywall and 36" distance for best wall wash coverage and effect.
- Available at any custom length up to 20'/6m.
- Made out of aluminum.
- Perfect for any flexible LED tape up to 17mm wide.
- Available in white. Other colors upon request.


DRIVER AVAILABLE:

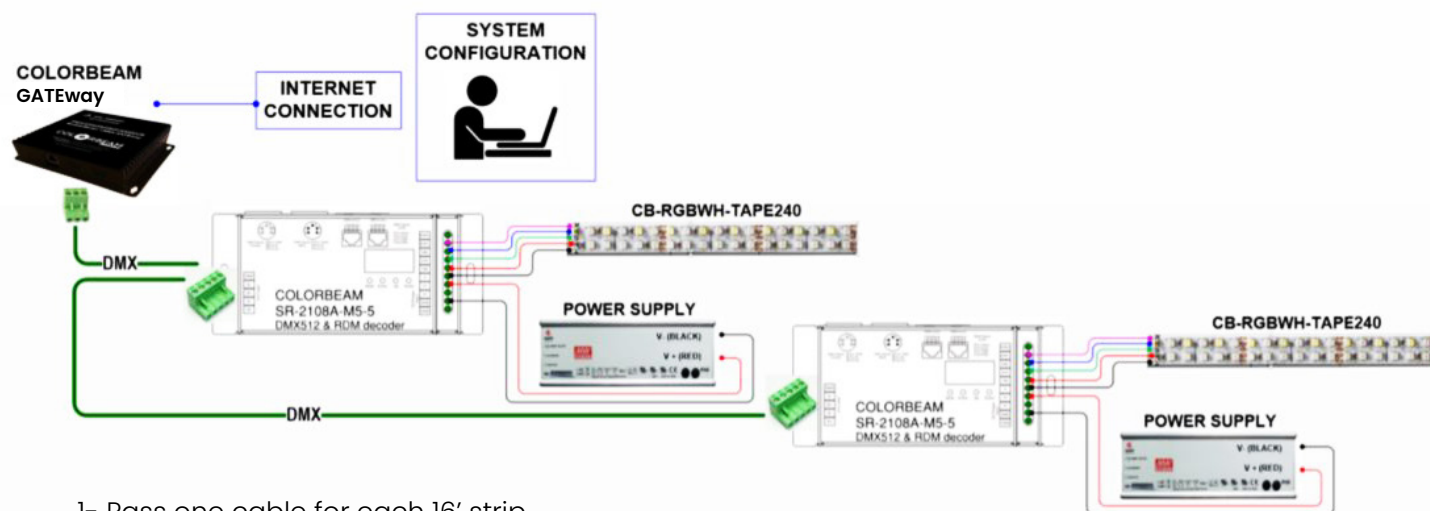
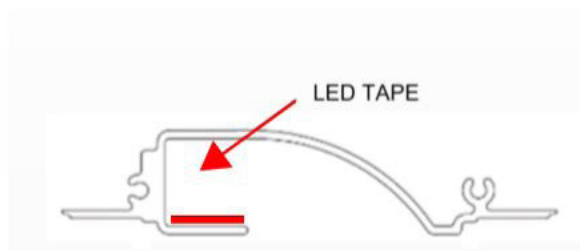
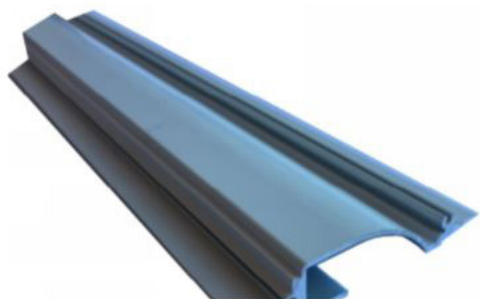
DMX-5CH-SR2108A (DMX 5 channel constant voltage 24V-350mA)

*Power supply separately

MODEL	DESCRIPTION
GIULIA-TAPE-120-BI	LED Fixture, Tape 120 LED, 2700-6500K, 9.6W/M, IP20
GIULIA-TAPE-120-BI-IP68	LED Fixture, Tape 120 LED, 2700-6500K, 9.6W/M, IP68
GIULIA-TAPE-120-W27K	LED Fixture, Tape 120 LED, 2700K, 9.6W/M, IP20
GIULIA-TAPE-120-W27K-IP68	LED Fixture, Tape 120 LED, 2700K, 9.6W/M, IP68
GIULIA-TAPE-144-W27K-UHP	LED Fixture, Tape 144 LED, 2700K, 27W/M, IP20
GIULIA-TAPE-144-W27K-UHP-IP68	LED Fixture, Tape 144 LED, 2700K, 27W/M, IP68
GIULIA-TAPE-60-W27K	LED Fixture, Tape 60 LED, 2700K, 14.4W/M, IP20
GIULIA-TAPE-60-W27K-IP68	LED Fixture, Tape 60 LED, 2700K, 14.4W/M, IP68
RGB	
GIULIA-TAPE-30-RGB	LED Fixture, Tape 30 LED, RGB, 7.2W/M, IP20
GIULIA-TAPE-30-RGB-IP68	LED Fixture, Tape 30 LED, RGB, 7.2W/M, IP68
GIULIA-TAPE-60-RGB	LED Fixture, Tape 60 LED, RGB, 14.4W/M, IP20
GIULIA-TAPE-60-RGB-IP68	LED Fixture, Tape 60 LED, RGB, 14.4W/M, IP68
RGB WHITE	
GIULIA-TAPE-60-RGB27K	LED Fixture, Tape 60 LED, RGB 2700K, 12W/M, IP20
GIULIA-TAPE-60-RGB27K-IP68	LED Fixture, Tape 60 LED, RGB 2700K, 12W/M, IP68



INSTALLATION:



- 1- Pass one cable for each 16' strip
- 2- You can connect up to a maximum of 4 strips on the same driver and power supply (note they will be controlled as one if on the same driver).
- 3- Calculate 3.5A VAC per power supply
- 4- DMX addresses:
 Driver #1: 001
 Driver #2: 006
 Driver #3: 011 Etc.
 Calculate 5channels per drivers **SR-2108A-M5-5 SETTINGS:** CH04 d.P. 5.4

***Note:** There is no test mode on SR-2108A-M5-5. For any testing you need to have a DMX network set up.