



# SPECIFICATION SHEET CBNA-GATEWAY

## CBNA GATEway - LIGHTING PROCESSOR

### DESCRIPTION

The Colorbeam Lighting GATEway is a stand-alone processor integrating a web based real-time configurable lighting software with a one universe DMX output.

### FEATURES

- Ethernet port 10/100
- One integrated DMX output, fully protected by OPTOCOUPLERS
- 5V 1A Power in 2-Pin terminal block
- 4 core 1.2 GHz processor
- Status LED
- Service button
- Built-in WEB server
- FAN-less enclosure
- Auto switching power supply (US plug included)  
international version available (international plug optional).

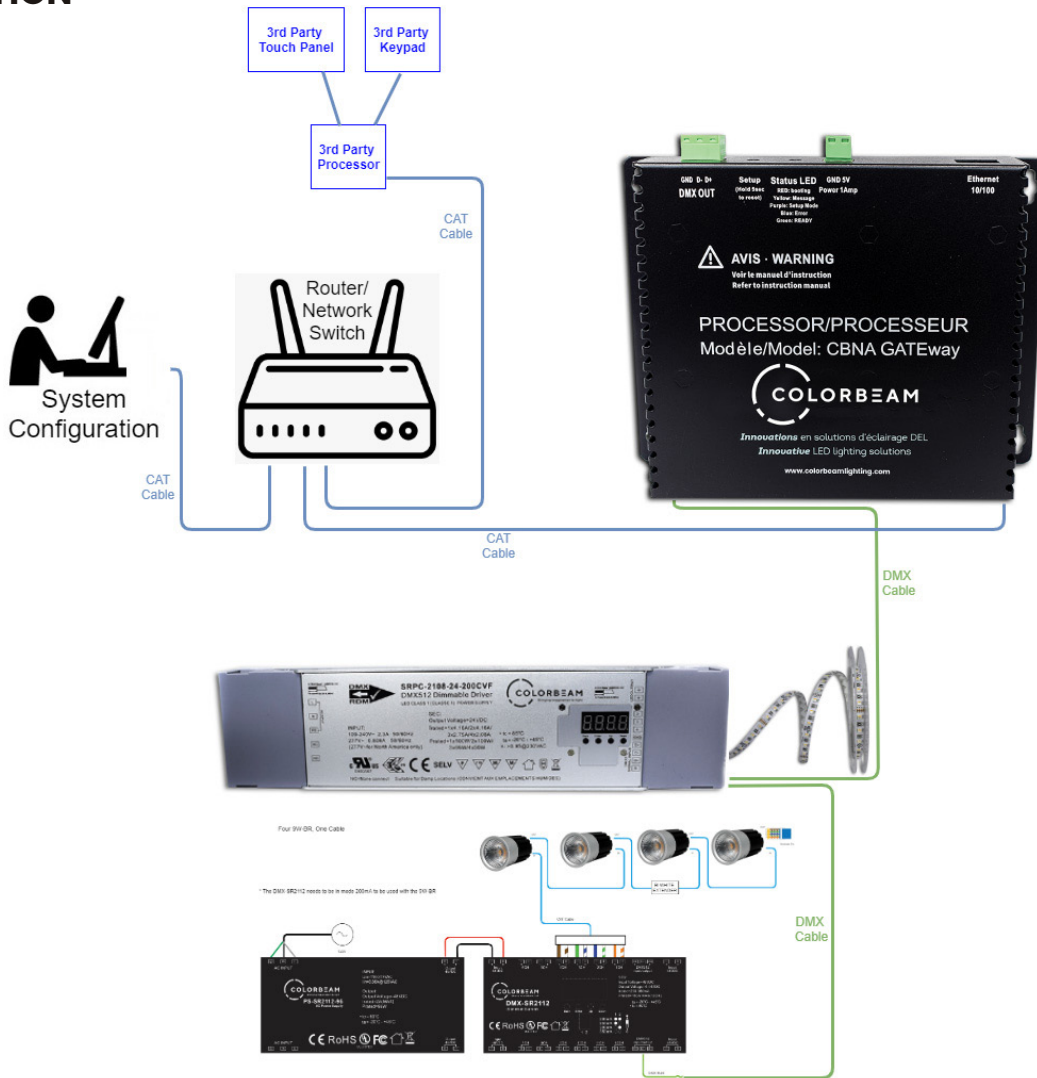
### SPECIFICATIONS

- Width: 178 mm
- Height: 137 mm
- Depth: 42 mm
- 4 screw wall mountable
- Weight: 620gr
- Operatng enviroment
- 0 to 50C non-condensing - dry location  
(when vertically mounted)



[www.colorbeamlighting.com](http://www.colorbeamlighting.com)

## INSTALLATION



## APPLICATIONS

- Commercial lighting
- Residential lighting
- Hospitality lighting
- Theatrical-show lighting
- The Colorbeam Lighting GATEway links home automation control systems to Colorbeam Lighting drivers and fixtures.

## ACCESSORIES

- Ethernet switch (3RD party)