



SPECIFICATION SHEET

TAPE-60-NF21-RGBW

DESCRIPTION

- Flexible horizontal bendable silicone LED neon tape
- Emits uniform dot-free soft light
- Flat surface with 120 degree beam angle
- 60 LEDs per meter, can be cut every 6 LEDs (100mm)
- Color /CCT: RGB + 3000K
- Full encapsulated silicone jacket with IP68 level



RGBW Lighting



Working Temperature



3 Year Limited Warranty



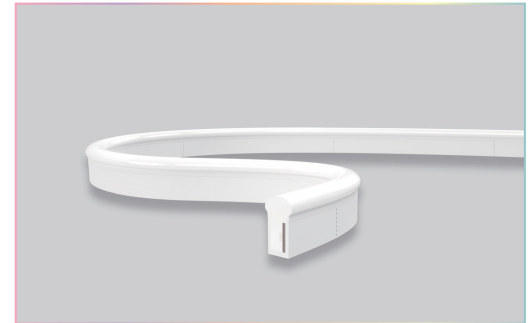
RGB+3000K

SPECIFICATIONS

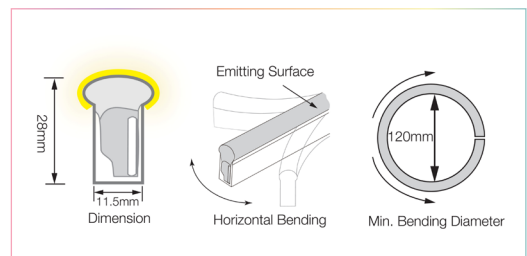
LED Quantity	60 LEDs/M
Color /CCT	RGB + 3000K
CRI	>90
Luminous Flux per Meter	269 Lm
Beam Angle	270°
Power Rating per Meter	17W
Input Voltage	24V
Housing Material	Eco PVC or Silicone
Minimum Bend Diameter	80mm
Cutting Unit	6 LEDs
Cutting Unit Length	100mm
IP Rating	IP68 Wet location submersible <2m
Operating Temperature Range	-40°C to 55°C
Compatible Decoders	Use SRPC 2108-24V-200, SR-2108A-M5, or SR-2108B-M24 driver/decoder & DMX-KP-512
Certificate	RoHS, UL Listed
Lifespan	50,000 hrs
Warranty	3 years

* All Neon Tapes are sold by meter.

MODEL CODES	DESCRIPTION
TAPE-60-NF21-RGB30K-IP68	Neon 21 Flexible Tape, RGB + 3000K, 17W/M, 72 LED pcs/M, 269 lm/M, CRI-RA90, 60 LEDs/M, Width 28mm, Height 11.5mm, 24V, IP68



Beam Angle	One Bin	Submersible	LM-80	Ambient Temp.
UV Resistant	Anti-Yellowing	Flame Resistant	Saltwater Resistant	Solvents Resistant
IK08	Dirt Resistant	UL Listed	RoHS	5 years warranty



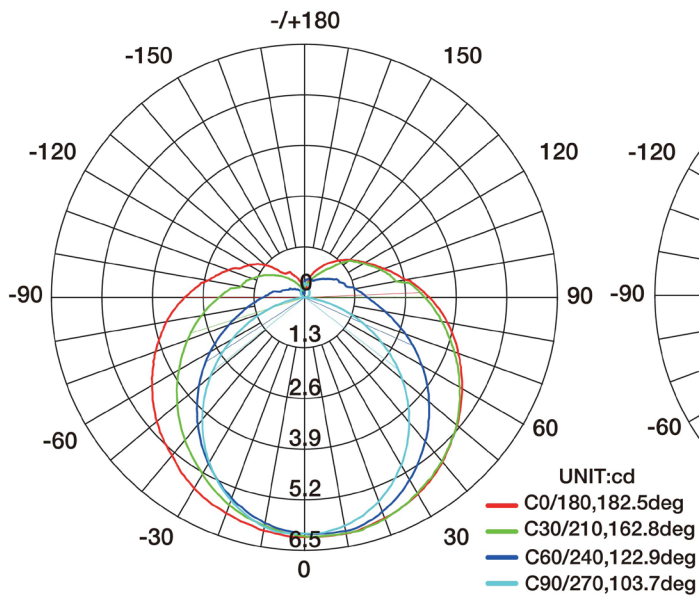
APPLICATIONS

- Outlining Facade of buildings
- Cove lighting
- Linear Lighting
- Signage
- Decorative lighting

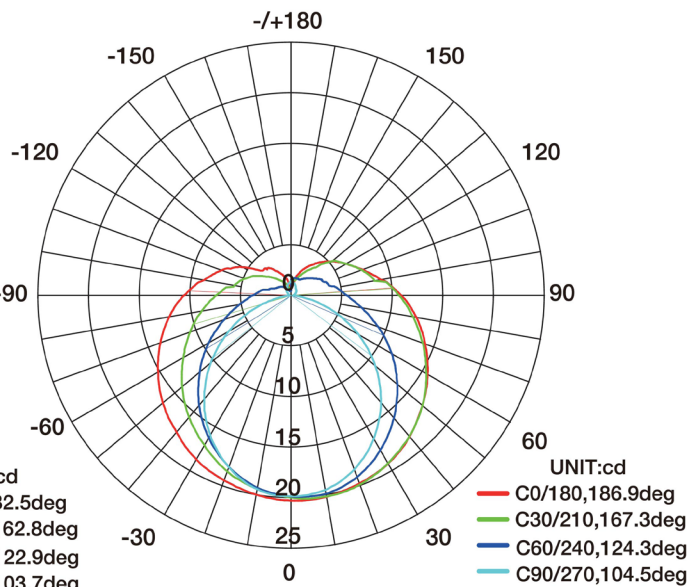
www.colorbeamlighting.com

PHOTOMETRIC INFORMATION

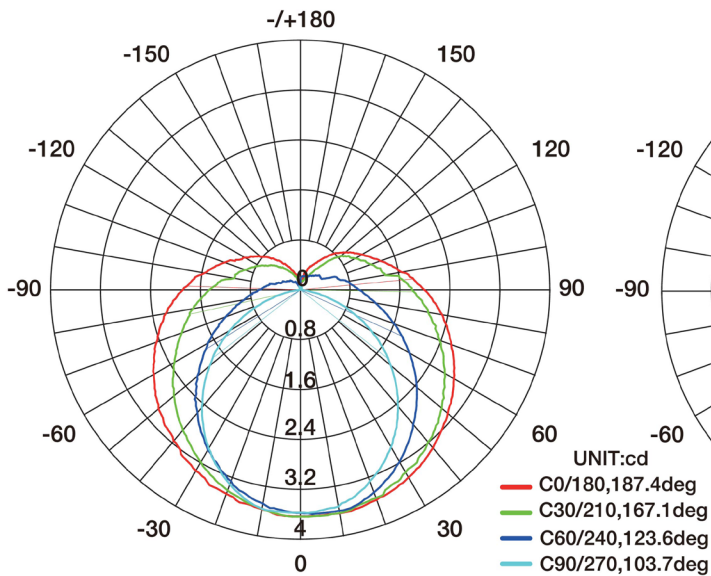
COLOR TEMPERATURE / RED



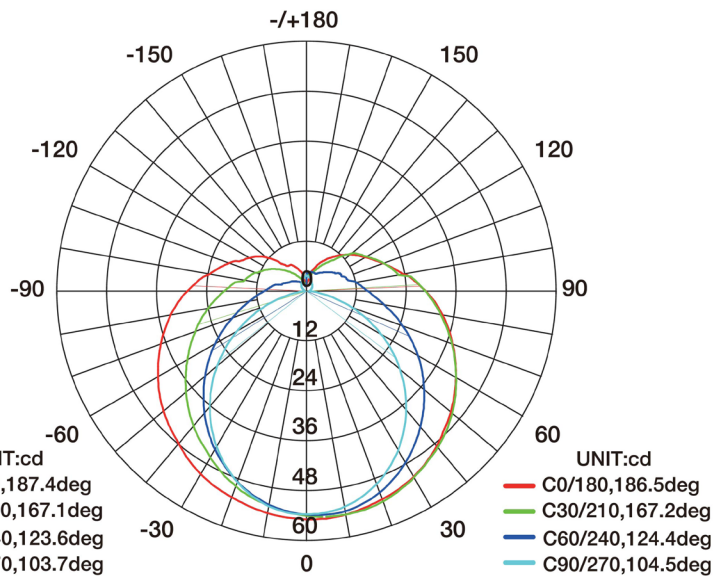
COLOR TEMPERATURE / GREEN



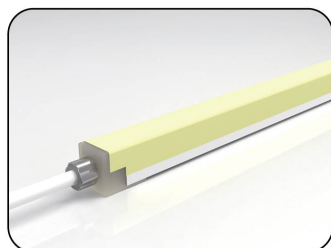
COLOR TEMPERATURE / BLUE



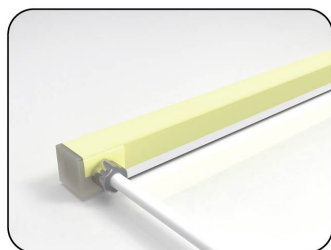
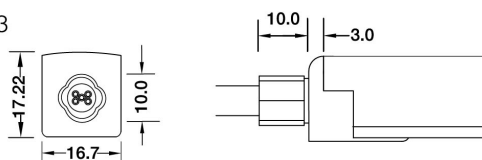
COLOR TEMPERATURE / 3000K



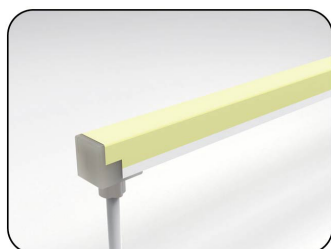
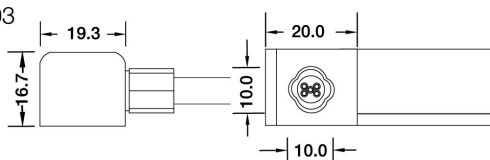
CONFIGURATION AND ACCESSORIES



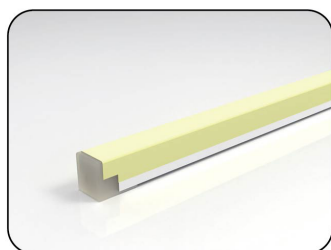
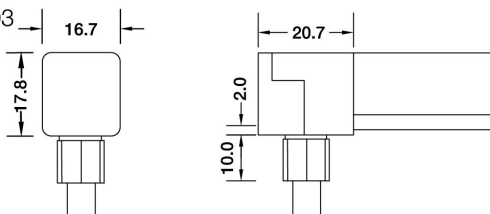
Direct Entry Connector
 MJ-SF18-RGBW-D01/02/03
 MJ-SF18-RGBW-D01SM
 MJ-SF18-RGBW-D02SF
 MJ-SF18-RGBW-D03SFM



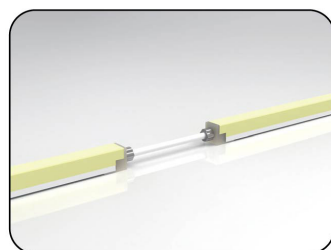
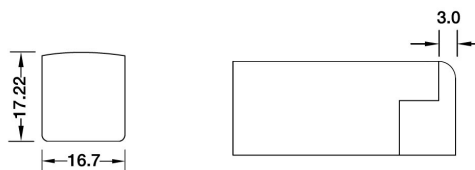
Side Entry Connector
 MJ-SF18-RGBW-S01/02/03
 MJ-SF18-RGBW-S01SM
 MJ-SF18-RGBW-S02SF
 MJ-SF18-RGBW-S03SFM



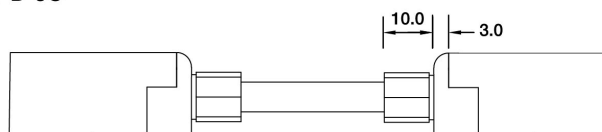
Bottom Entry Connector
 MJ-SF18-RGBW-S01/02/03
 MJ-SF18-RGBW-S01SM
 MJ-SF18-RGBW-S02SF
 MJ-SF18-RGBW-S03SFM



End Cap



Jumper
 MJ-SF18-RGBW-D-JC





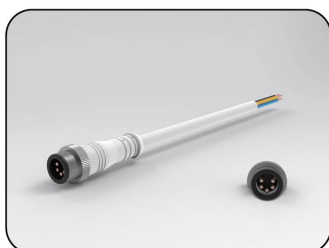
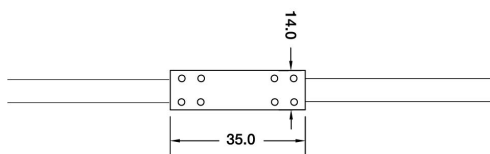
SPECIFICATION SHEET

TAPE-60-NF21-RGBW

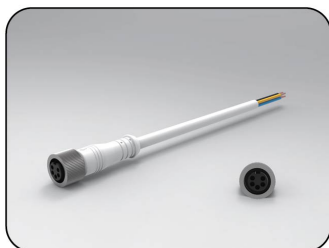
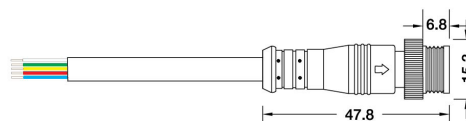
CONFIGURATION AND ACCESSORIES



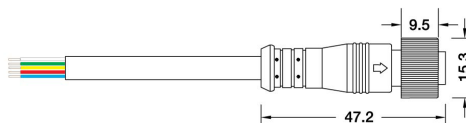
Waterproof Interrupter



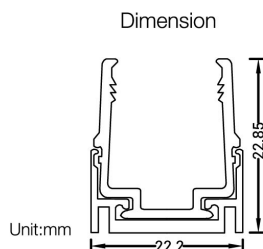
Male Connector
SYZ-M12-M-5C-05-W



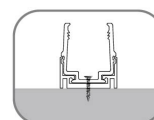
Female Connector
SYZ-M12-F-5C-05-W



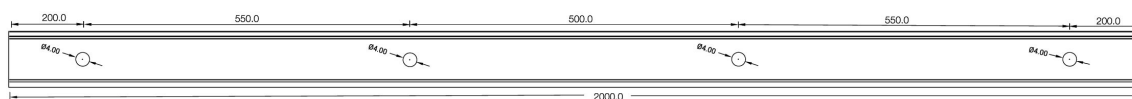
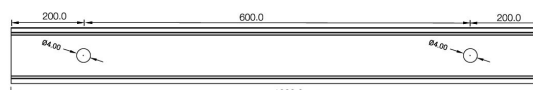
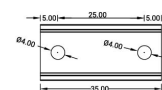
CONFIGURATION AND ACCESSORIES



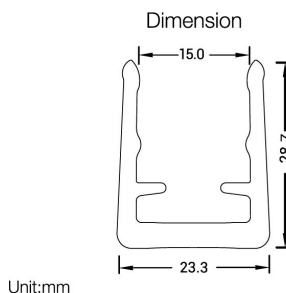
Installation Way



Surface Mounted



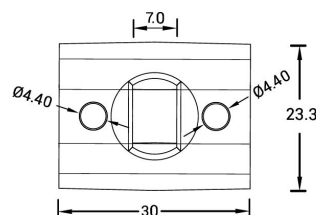
Model	W x H(mm)	Standard Length	Screw Holes	Holes Numbers	Suitable Product
ALC-PC18S01-ST	22.2*22.85	35mm	Φ4.0mm	2	F16, F17, F18, SF16, SF17, SF18
		1000mm	Φ4.0mm	2	F16, F17, F18, SF16, SF17, SF18
		2000mm	Φ4.0mm	4	F16, F17, F18, SF16, SF17, SF18



Installation Way



Surface Mounted



Model	W x H(mm)	Standard Length	Screw Holes	Holes Numbers	Suitable Product
SJJ-ZSH-008-PC	23.3*28.7	30mm	Φ4.40mm	2	F16, F17, F18, SF16, SF17, SF18

COMPATIBLE PROCESSOR & CONTROLLERS

GATEway 1DMX



Lighting processor integrated with a configurable software, 1 DMX output, 1 universe controlling 512 DMX addresses, 5VDC, 1A output.

DMX-KP-512



The DMX-KP-512 control panel is a master controller designed to control the DMX controllers.

DRV-SRPC2108-24-200CVF



DMX driver, 4 channels, 24VDC, 200W built-in power supply, constant Voltage, 100-240VAC input, 4x2A output.

**Compatible with white, bi-white, RGB, and RGBW luminaires.*

SR-2108A-M5-5



DMX decoder, 5 channels, VDC, Constant Voltage
Require an external VDC power supply, available from 96W to 320W, 12-24VDC input, 5x8A output.

**Compatible with white, bi-white, RGB, and RGBW luminaires.*

SR-2108B-M24-5



DMX decoder, 24 channels, VDC, Constant Voltage.
Require an external VDC power supply, available from 96W to 320W, 12-24VDC input, 24x4A output.

**Compatible with white, bi-white, RGB, and RGBW luminaires.*