



SPECIFICATION SHEET

TAPE-120-NF15-BI

DESCRIPTION

- Flexible horizontal bendable silicone LED neon tape
- Emits uniform dot-free soft light
- Flat surface with 120 degree beam angle
- 120 LEDs per meter, can be cut every 12 LEDs (100mm)
- Color /CCT: 1800K + 6500K
- Full encapsulated silicone jacket with IP68 level



Tunable Lighting



Working Temperature



3 Year Limited
Warranty



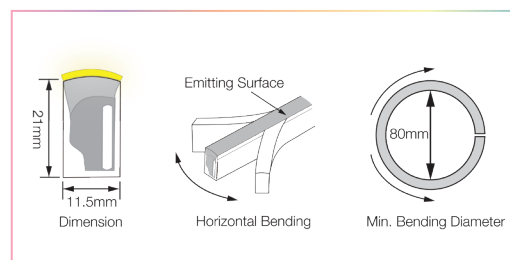
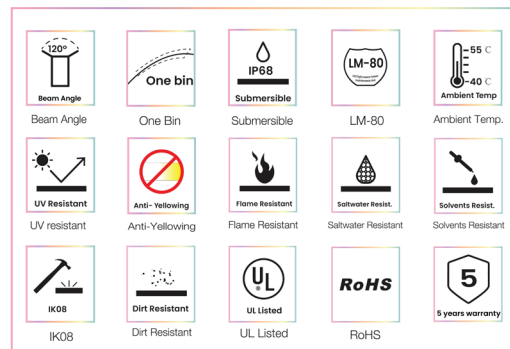
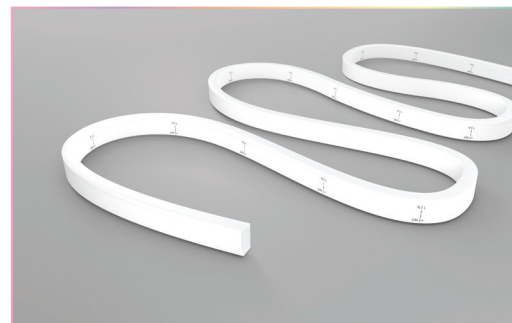
1800K-6500K

SPECIFICATIONS

LED Quantity	120 LEDs/M
Color /CCT	1800K + 6500K
CRI	>90
Luminous Flux per Meter	220 Lm + 265 Lm
Beam Angle	120°
Power Rating per Meter	12W
Input Voltage	24V
Housing Material	Eco PVC or Silicone
Minimum Bend Diameter	80mm
Cutting Unit	12 LEDs
Cutting Unit Length	100mm
IP Rating	IP68 Wet location submersible <2m
Operating Temperature Range	-40°C to 55°C
Compatible Decoders	Use SRPC 2108-24V-200, SR-2108A-M5, or SR-2108B-M24 driver/decoder & DMX-KP-512
Certificate	RoHS, UL Listed
Lifespan	50,000 hrs
Warranty	3 years

* All Neon Tapes are sold by meter.

MODEL CODES	DESCRIPTION
TAPE-120-NF15-18-65K-IP68	Neon 15 Flexible Tape, 1800K + 6500K, 12W/M, 120 LED pcs/M, 296lm/M, CRI>RA90, 120 LEDs/M, Width 11.5mm, Height 21mm, 24V, IP68



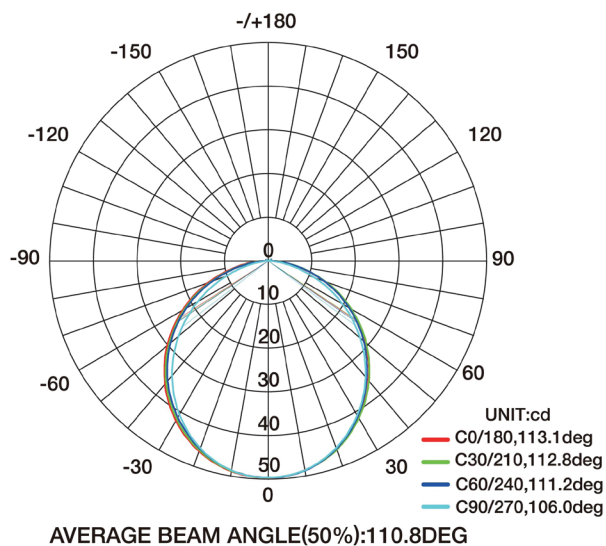
APPLICATIONS

- Outlining Facade of buildings
- Cove lighting
- Linear Lighting
- Signage
- Decorative lighting

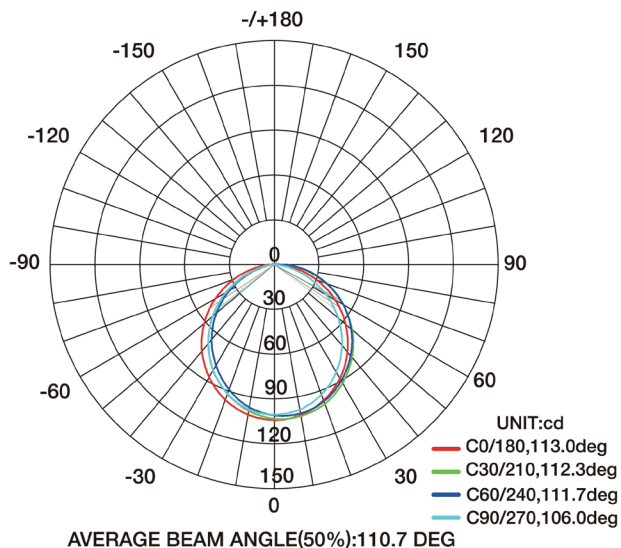
www.colorbeamlighting.com

PHOTOMETRIC INFORMATION

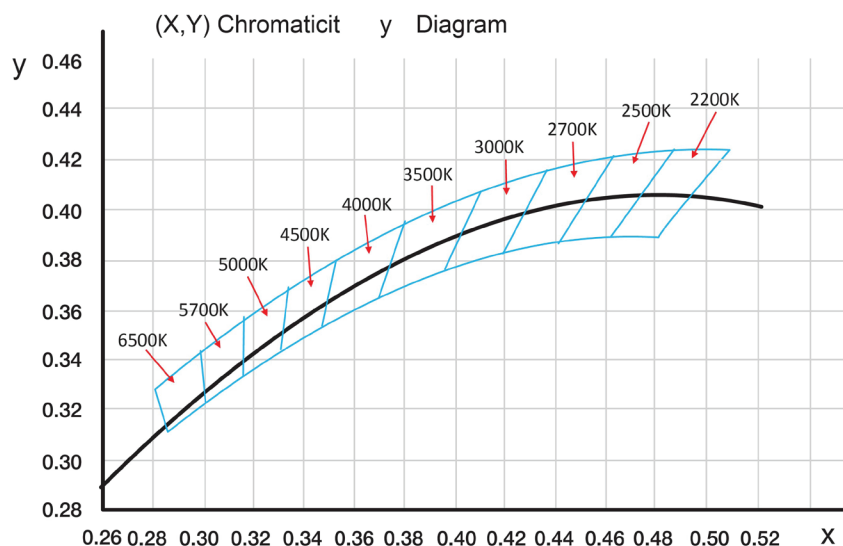
COLOR TEMPERATURE / 1800K



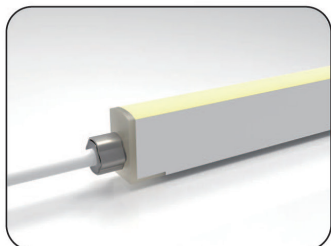
COLOR TEMPERATURE / 6500K



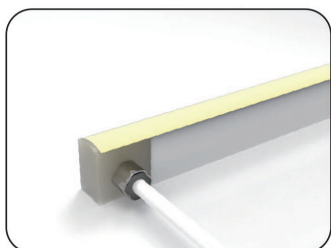
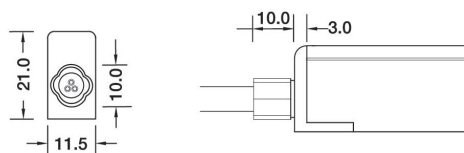
White Color Charts



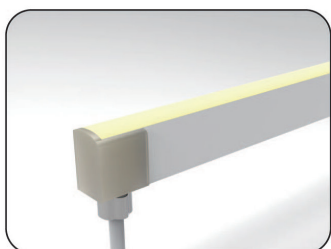
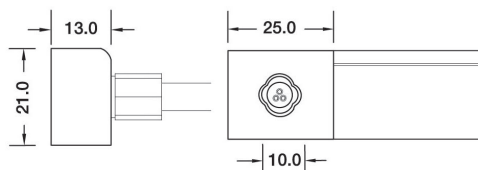
CONFIGURATION AND ACCESSORIES



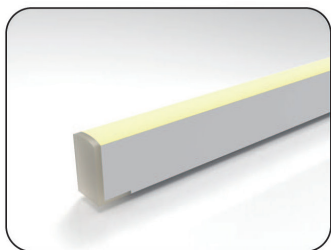
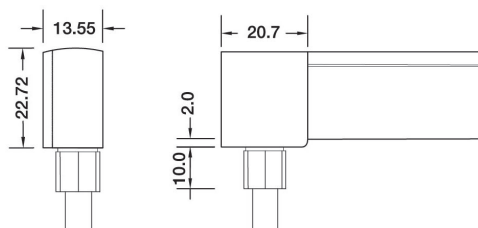
Direct Entry Connector
 MJ-SF15-DW-D01/02/03
 MJ-SF15-DW-D01SM
 MJ-SF15-DW-D02SF
 MJ-SF15-DW-D03SFM



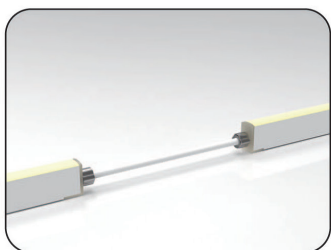
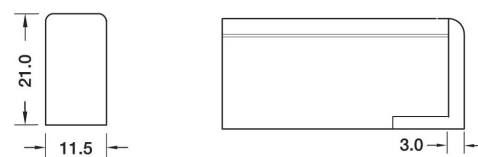
Side Entry Connector
 MJ-SF15-DW-S01/02/03
 MJ-SF15-DW-S01SM
 MJ-SF15-DW-S02SF
 MJ-SF15-DW-S03SFM



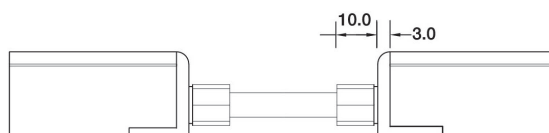
Bottom Entry Connector
 MJ-SF15-DW-B01/02/03
 MJ-SF15-DW-B01SM
 MJ-SF15-DW-B02SF
 MJ-SF15-DW-B03SFM



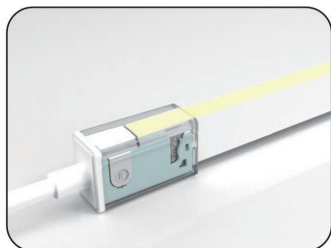
End Cap



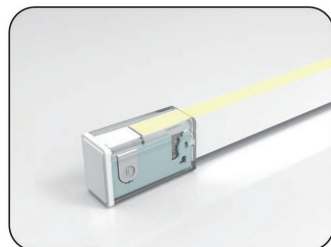
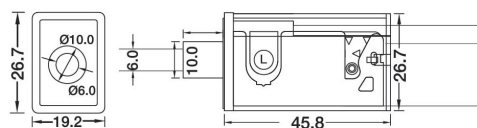
Jumper
 MJ-SF15-DW-D-JC



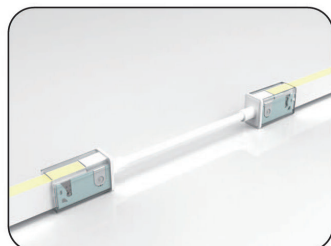
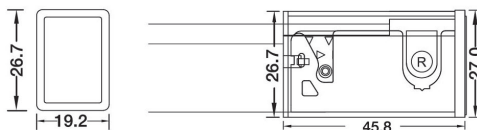
CONFIGURATION AND ACCESSORIES



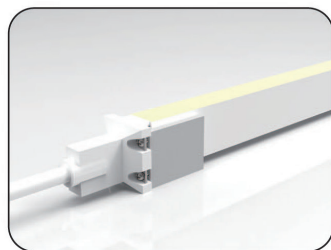
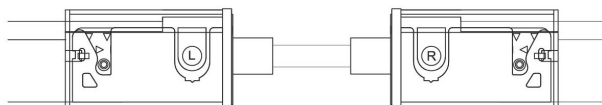
DIY Snap Connector
DIY-SN-FR-15-D-01/02-D3



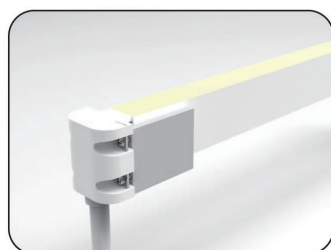
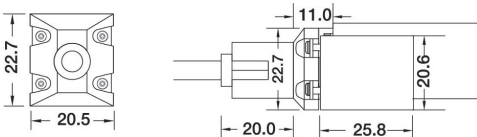
DIY Snap End Cap
DIY-SN-END-15-D-01/02



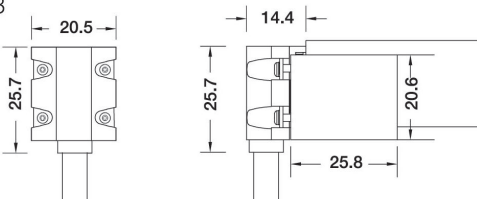
DIY Snap Extension Connector
DIY-SN-EXT-15-D3



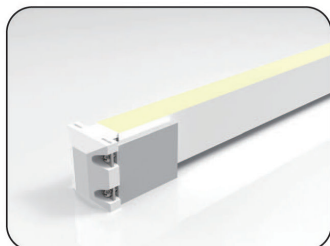
DIY Screw Connector
DIY-SC-FR-15-D-01/02-D3



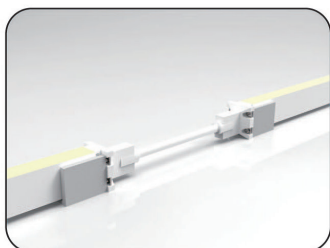
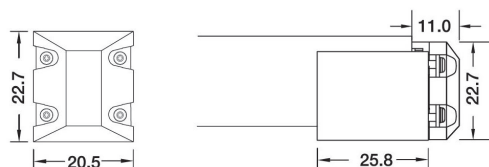
DIY Screw Connector
DIY-SC-FR-15-B-01/02-D3



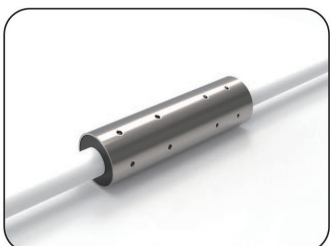
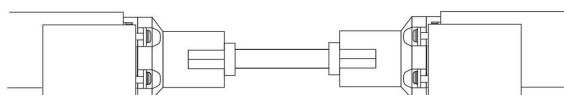
CONFIGURATION AND ACCESSORIES



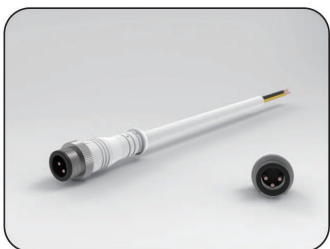
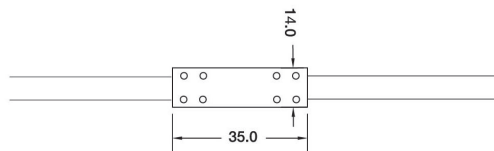
DIY Screw Connector
DIY-SC-END-15



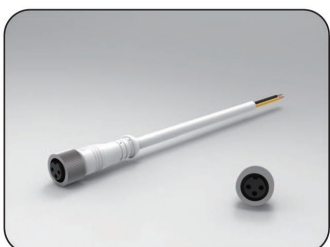
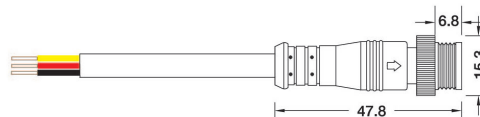
DIY Screw Extension Connector
DIY-SC-EXT-15-D3



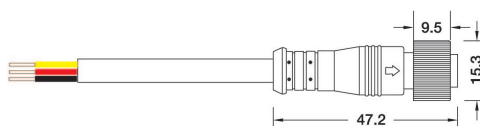
Waterproof Interrupter



Male Connector
SYZ-M12-M-3C-05-W

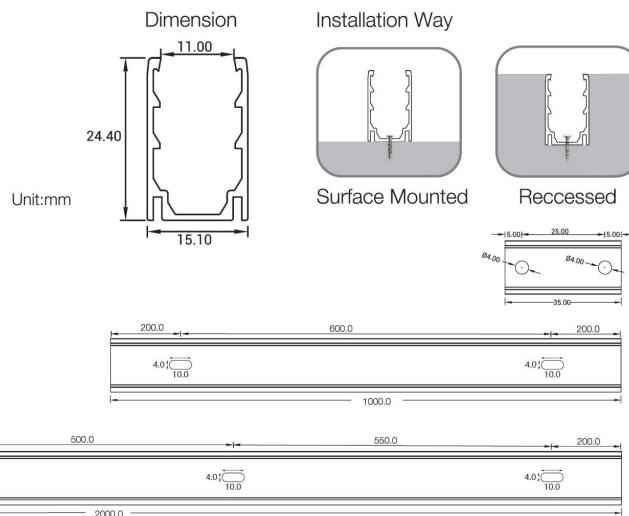


Female Connector
SYZ-M12-F-3C-05-W

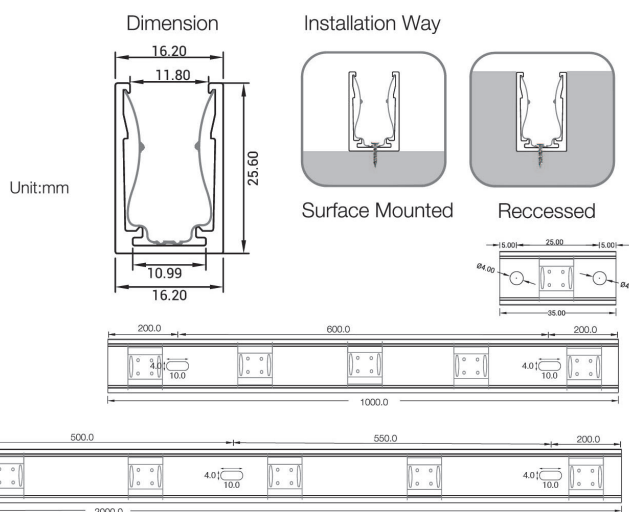
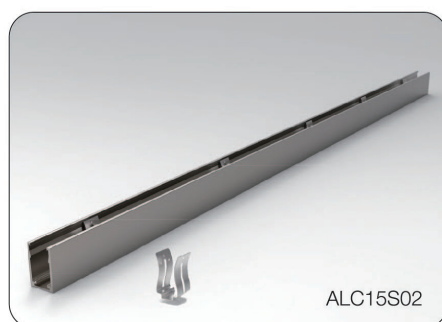


LED LINEAR FLEX MOUNTING CHANNEL

1. Aluminum Channel

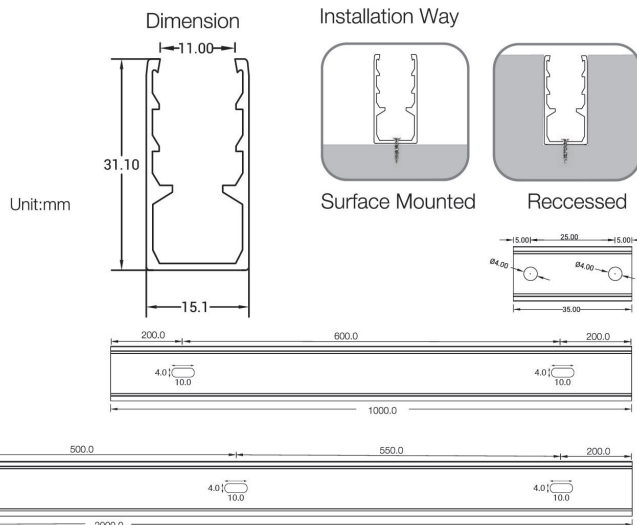
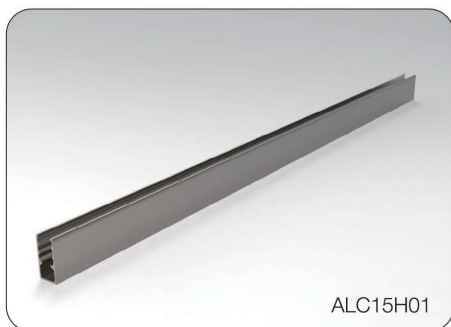


Model	W x H(mm)	Standard Length	Screw Holes	Holes Numbers	Suitable Product
ALC15S01-035	15.1*24.4	35mm	Φ4.0mm	2	F15 , SF15
ALC15S01-100		1000mm	4.0x10mm	2	F15 , SF15
ALC15S02-200		2000mm	4.0x10mm	4	F15 , SF15

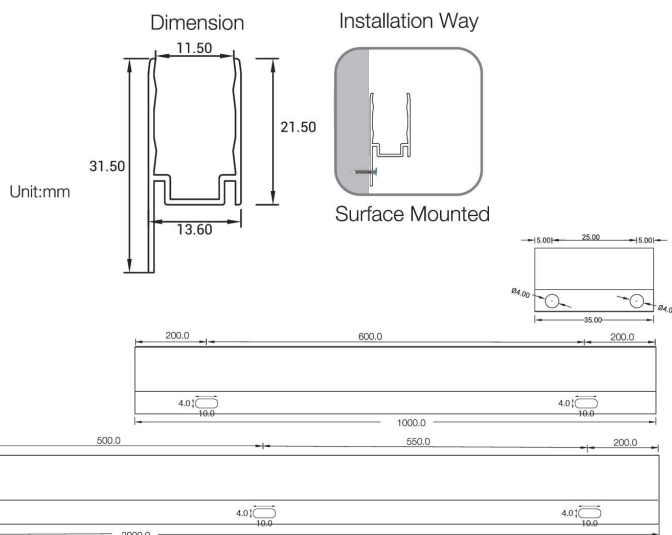
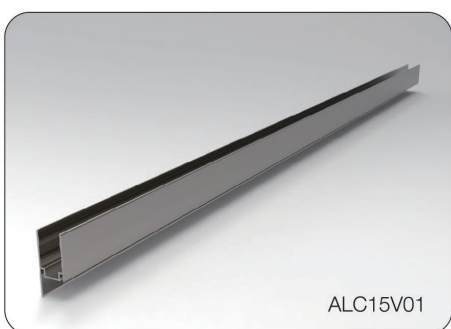


Model	W x H(mm)	Standard Length	Screw Holes	Holes Numbers	Clips	Suitable Product
ALC15S02-035	16.2*25.6	35mm	Φ4.0mm	2	1	F15 , SF15
ALC15S02-100		1000mm	4.0x10mm	2	5	F15 , SF15
ALC15S02-200		2000mm	4.0x10mm	4	8	F15 , SF15

LED LINEAR FLEX MOUNTING CHANNEL



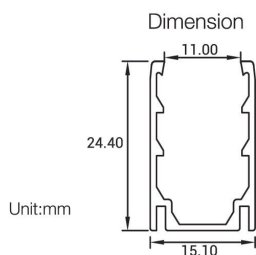
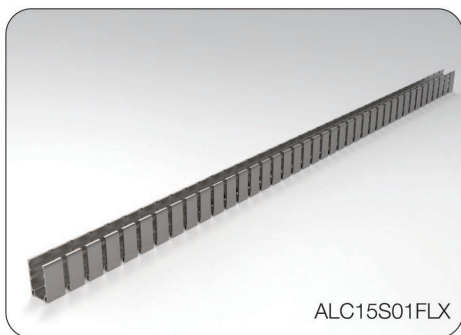
Model	W x H(mm)	Standard Length	Screw Holes	Holes Numbers	Suitable Product
ALC15H01-035	15.1*31.1	35mm	Φ4.0mm	2	F15, SF15
ALC15H01-100		1000mm	4.0x10mm	2	F15, SF15
ALC15H01-200		2000mm	4.0x10mm	4	F15, SF15



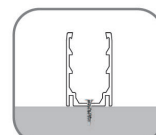
Model	W x H(mm)	Standard Length	Screw Holes	Holes Numbers	Suitable Product
ALC15V01-035	13.6*31.5	35mm	Φ4.0mm	2	F15, SF15
ALC15V01-100		1000mm	4.0x10mm	2	F15, SF15
ALC15V01-200		2000mm	4.0x10mm	4	FF15, SF15

LED LINEAR FLEX MOUNTING CHANNEL

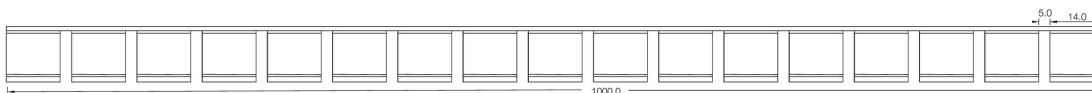
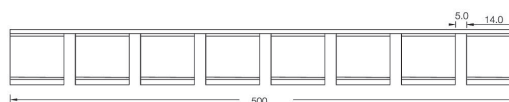
Flexible Aluminum Channel



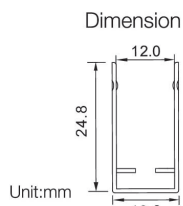
Installation Way



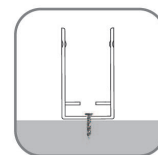
Surface Mounted



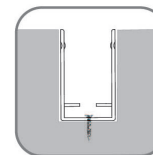
Model	W x H(mm)	Standard Length	Suitable Product
ALC15S01FLX-50	15.1*24.4	500mm	F15, SF15
ALC15S01FLX-100		1000mm	F15, SF15



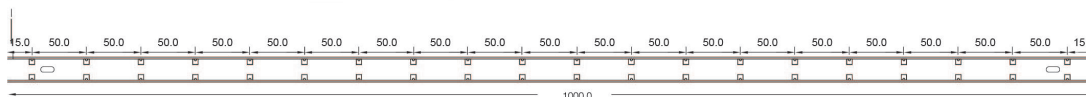
Installation Way



Surface Mounted



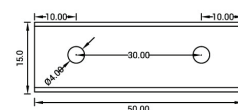
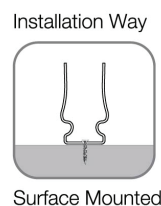
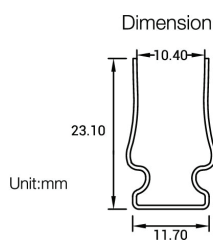
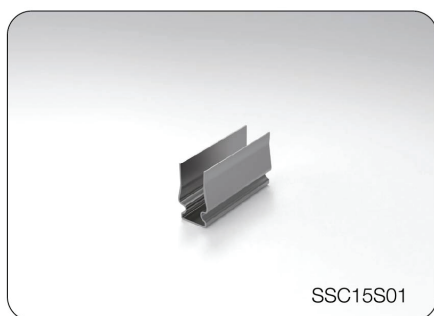
Recessed



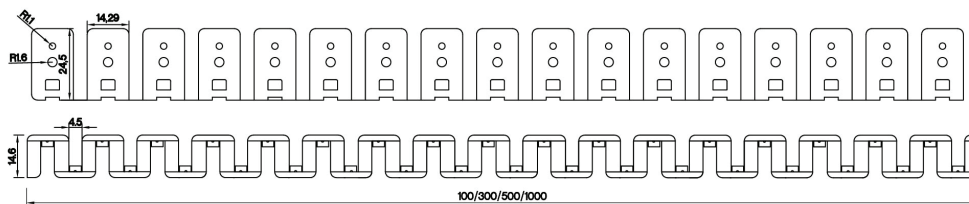
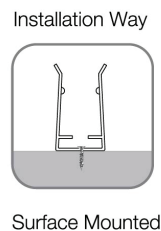
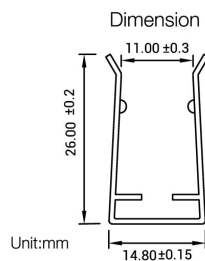
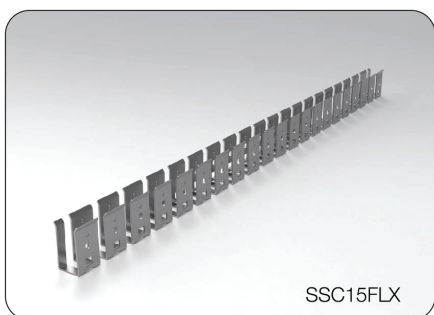
Model	W x H(mm)	Standard Length	Screw Holes	Holes Numbers	Suitable Product
SSC15S02-100	13.6*24.8	1000mm	4.0x10mm	2	F15, SF15

LED LINEAR FLEX MOUNTING CHANNEL

Stainless steel Channel



Model	W x H(mm)	Standard Length	Screw Holes	Holes Numbers	Suitable Product
SSC15S01-05	11.7*23.1	50mm	Φ4.0mm	2	F15, SF15



Model	W x H(mm)	Standard Length	Suitable Product
SSC15 FLX01	14.8*26.0	100mm	F15, SF15
SSC15FLX03		300mm	F15, SF15
SSC15FLX05		500mm	F15, SF15
SSC15FLX10		1000mm	F15, SF15

COMPATIBLE PROCESSOR & CONTROLLERS

GATEway 1DMX



Lighting processor integrated with a configurable software, 1 DMX output, 1 universe controlling 512 DMX addresses, 5VDC, 1A output.

DMX-KP-512



The DMX-KP-512 control panel is a master controller designed to control the DMX controllers.

DRV-SRPC2108-24-200CVF



DMX driver, 4 channels, 24VDC, 200W built-in power supply, constant Voltage, 100-240VAC input, 4x2A output.

**Compatible with white, bi-white, RGB, and RGBW luminaires.*

SR-2108A-M5-5



DMX decoder, 5 channels, VDC, Constant Voltage
Require an external VDC power supply, available from 96W to 320W, 12-24VDC input, 5x8A output.

**Compatible with white, bi-white, RGB, and RGBW luminaires.*

SR-2108B-M24-5



DMX decoder, 24 channels, VDC, Constant Voltage.
Require an external VDC power supply, available from 96W to 320W, 12-24VDC input, 24x4A output.

**Compatible with white, bi-white, RGB, and RGBW luminaires.*