



SPECIFICATION SHEET

TAPE-COB-BI-WHITE

DESCRIPTION

Colorbeam's COB (Chip-on-Board) LED Tape delivers high-performance lighting with superior brightness, efficiency, and flexibility. Its ultra-thin, bendable design provides smooth, uniform lighting for up to 5 meters (16.4 ft), perfect for creative installations.

KEY FEATURES

- **Soft, Uniform Light:** COB technology ensures consistent, smooth illumination with a premium bounding wall for better light uniformity.
- **Superior Durability:** Thick copper construction ensures stable voltage and brightness, with a protective structure for enhanced reliability and flexibility.
- **Indoor & Outdoor Use:** Available in IP20 and IP65 waterproof options, ideal for versatile indoor and outdoor applications.
- **Perfect for designers and architects,** this innovative lighting solution elevates any space with seamless beauty and functionality.



Dimmable Lighting
0 to 100% flicker free dimming



Tunable Lighting



Working Temperature



3 Year Limited
Warranty

SPECIFICATIONS

Power	14W/m
Input Voltage	24VDC
Chip Qty	608chips/m [185chips/ft]
Chip Current	8mA/chip
Dimensions - IP20	5000 * 10 * 2.3mm [197*0.39*0.09in.]
Dimensions - IP65	5000 * 12 * 4mm [197* 0.47 * 0.16in.]
Color Temperature	2200K-6500K
CRI:	W: Ra≥90
Beam Angle	150°
Standard Length:	5m [16.4 FT] (power fed on one side)
Light Source	COB (Chip On Board)
Warranty:	3 years
Certificate:	CE, RoHS, UL Listed

MODEL CODES	DESCRIPTION
TAPE-COB-BI22-65K-IP20	Tunable White COB Tape, 2200-6500K, 18W/m, 24V, 608 pcs/M, 14W/M, 5M/roll, IP20
TAPE-COB-BI22-65K-IP65	Tunable White COB Tape, 2200-6500K, 18W/m, 24V, 608 pcs/M, 14W/M, 5M/roll, IP65



COLOR TEMPERATURE

2200K 6500K



TYPICAL APPLICATIONS

- ✓ Accent lighting
- ✓ Decorative lighting
- ✓ Architectural lighting

www.colorbeamlighting.com



SPECIFICATION SHEET

TAPE-COB-BI-WHITE

Luminous Flux Specification

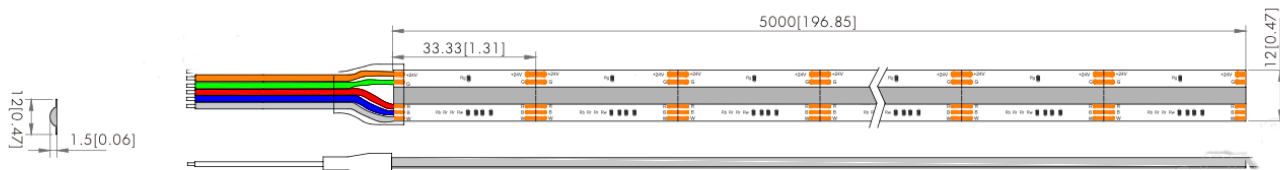
Part Number	Dimensions (L*W*H)	Luminous Flux: $\pm 10\%$ (Mix)	Light Efficiency	Luminous Flux $\pm 10\%$ (2200K)	Light Efficiency (2200K)	Luminous Flux $\pm 10\%$ (6500K)	Light Efficiency (6500K)
TAPE-COB-BI22-65K-IP20	5000*10*2.3mm [197*0.39*0.09]	1260lm/M [384lm/ft]	90lm/W	491lm/M [149lm/ft]	70m/M	714lm/M [218lm/ft]	102lm/W
TAPE-COB-BI22-65K-IP65	5000*12*4mm [197*0.47*0.16]	1197lm/M [365lm/ft]	86m/M	466lm/M [142lm/ft]	67lm/M [17lm/ft]	679lm/M [207lm/ft]	97lm/W

Power & Brightness vs Length Characteristics					
Length Of Single Product	1m [3.28FT]	2m [6.56FT]	3m [9.48T]	4m [13.1FT]	5m [16.4FT]
Actual Measured Power	14.8W	27.8W	38.6W	46.7W	53.2W
Power Maintenance Rate	100%	93.9%	86.9%	78.9%	71.9%
Brightness Maintenance Rate	93.2%	88.6%	78.5%	69%	57.2%

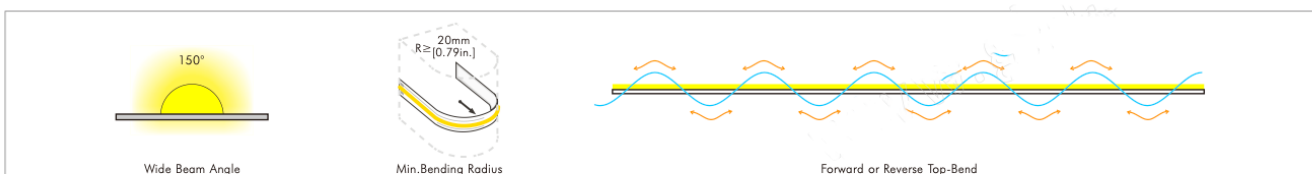
Picture & Diagram



Unit: mm[in.]



IP20 (Dry)



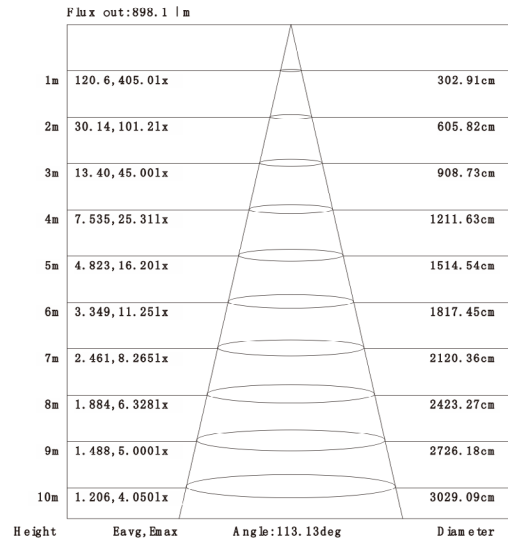
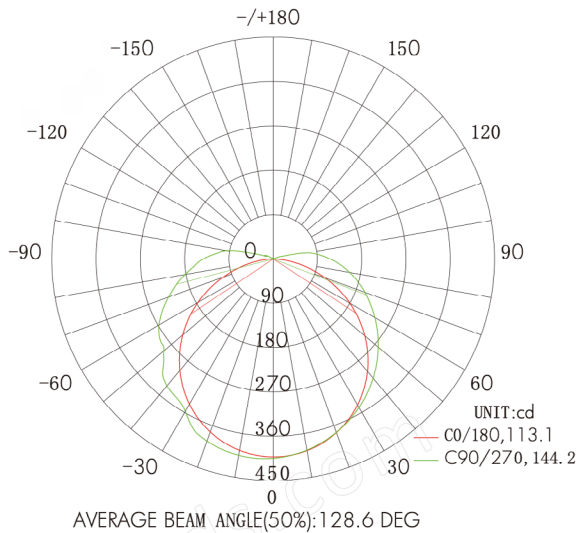
www.colorbeamlighting.com

450 Montee de Liesse
Montreal, QC H4T 1N8

Tel: 844-301-CBNA (2262) Email: info@colorbeamlighting.com

Colorbeam Lighting Inc. reserves the right to make changes in specifications and/or to discontinue any product at any time without notice or obligation and will not be liable for any consequences resulting from the use of this publication.

Light Distribution Diagram



2200+6500K, IP20 (dry)