



SPECIFICATION SHEET

TAPE-COB-DW

(DIM TO WARM)

DESCRIPTION

Colorbeam's COB (Chip-on-Board) LED Tape delivers high-performance lighting with superior brightness, efficiency, and flexibility. Its ultra-thin, bendable design provides smooth, uniform lighting for up to 5 meters (16.4 ft), perfect for creative installations.

KEY FEATURES

- **Soft, Uniform Light:** COB technology ensures consistent, smooth illumination with a premium bounding wall for better light uniformity.
- **Superior Durability:** Thick copper construction ensures stable voltage and brightness, with a protective structure for enhanced reliability and flexibility.
- **Indoor & Outdoor Use:** Available in IP20 and IP65 waterproof options, ideal for versatile indoor and outdoor applications.
- **Perfect for designers and architects,** this innovative lighting solution elevates any space with seamless beauty and functionality.



Dim to Warm
0 to 100% flicker free dimming



Working Temperature
-10°C to 40°C



3 Year Limited
Warranty

SPECIFICATIONS

Power ±10%	10W/m [3.05/ft] @ 3000K
Input Voltage	24VDC
Dimensions - IP20	5000 * 10 * 2 mm [197*0.39*.08in]
Dimensions - IP65	5000 *12 * 4mm [197* 0.47 * 0.16in.]
Min. Unit & Chip Qty	576chips/M [176chips/ft.]
Color Temperature	1800K-3000K
Chip Current	6mA/chip
CRI:	W: Ra≥90
Beam Angle	150°
Standard Length:	5m [16.4 FT] (power fed on one side)
Light Source	COB (Chip On Board)
Warranty:	3 years
Certificate:	CE, RoHS, UL Listed

MODEL CODES	DESCRIPTION
Tape-COB-DW18-30K-IP20	Dim to Warm COB Tape, 1800-3000K, Width 10mm (0.39 in), 5M (196.85 in), Ra >90, IP20
Tape-COB-DW18-30K-IP65	Dim to Warm COB Tape, 1800-3000K, Width 10mm (0.39 in), 5M (196.85 in), Ra >90, IP65



COLOR TEMPERATURE

1800K - 3000K



TYPICAL APPLICATIONS

- ✓ Accent lighting
- ✓ Decorative lighting
- ✓ Architectural lighting



SPECIFICATION SHEET

TAPE-COB-DW

(DIM TO WARM)

Luminous Flux Specification

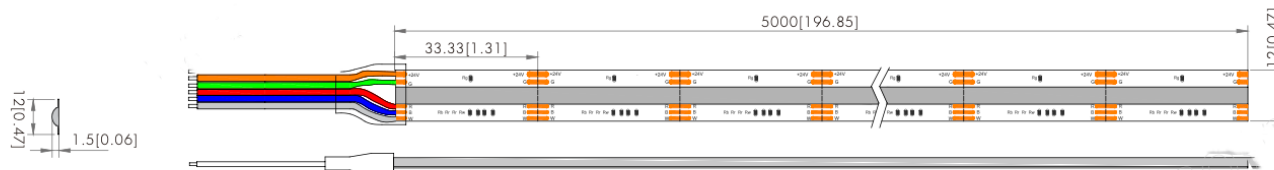
Part Number	Dimensions (L*W*H)	IP Rating	Luminous Flux±10%(Mix)	Light Efficiency
Tape-COB-DW18-30K-IP20	5000*10*2mm [197*0.39*0.08]	IP20 [dry]	920lm/M[280lm/ft.] (3000K)	92lm/W (3000K)
Tape-COB-DW18-30K-IP65	5000*12*4mm [197*0.47*0.16]	IP65 [wet]	874lm/M[266lm/ft.] (3000K)	87lm/W (3000K)

Power & Brightness vs Length Characteristics					
Length Of Single Product	1m [3.28FT]	2m [6.56FT]	3m [9.48T]	4m [13.1FT]	5m [16.4FT]
Actual Measured Power	14.8W	19.7W	26.W	31.9W	37.9W
Power Maintenance Rate	100%	96.6%	85.9%	78.2%	74.3%
Brightness Maintenance Rate	96.8%	94.5%	93.8%	83.3%	78.7%

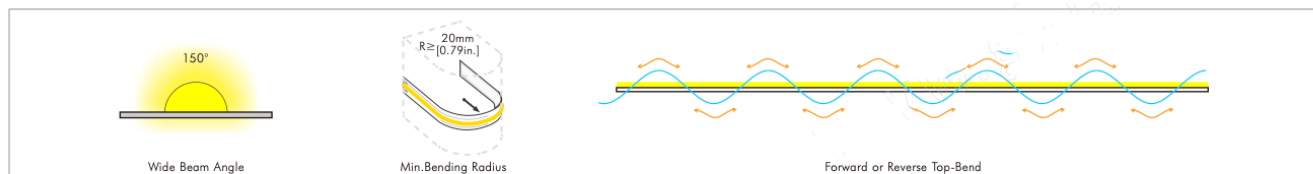
Picture & Diagram



Unit: mm[in.]

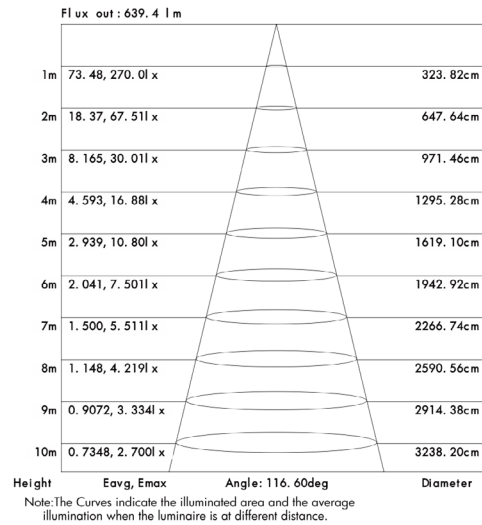
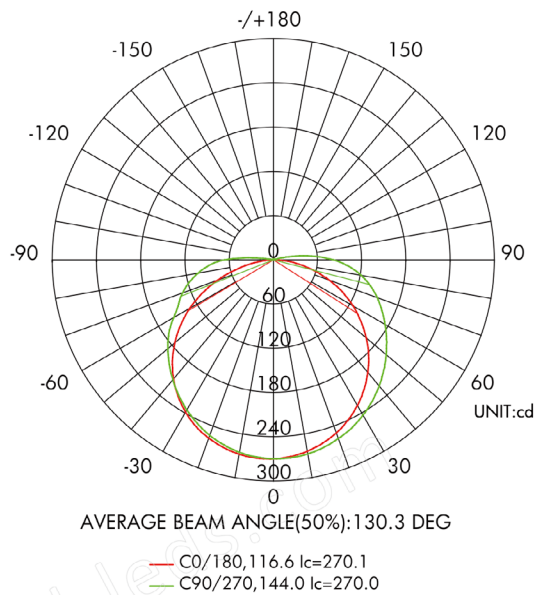


IP20 (Dry)



www.colorbeamlighting.com

Light Distribution Diagram



3000K, IP20 (dry)

Dimming Curve Demonstration

