



SPECIFICATION SHEET

TAPE-120-NF16-BI

DESCRIPTION

- Flexible horizontal bendable silicone LED neon tape
- Emits uniform dot-free soft light
- Flat surface with 120 degree beam angle
- 120 LEDs per meter, can be cut every 12 LEDs (100mm)
- Color /CCT: 1800K + 6500K
- Full encapsulated silicone jacket with IP68 level



Tunable Lighting



Working Temperature



3 Year Limited
Warranty

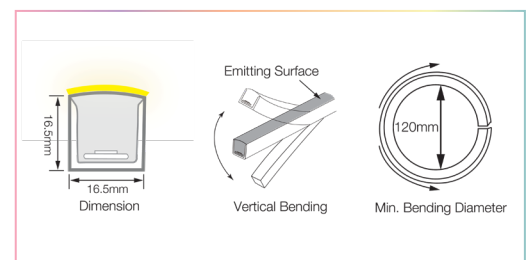
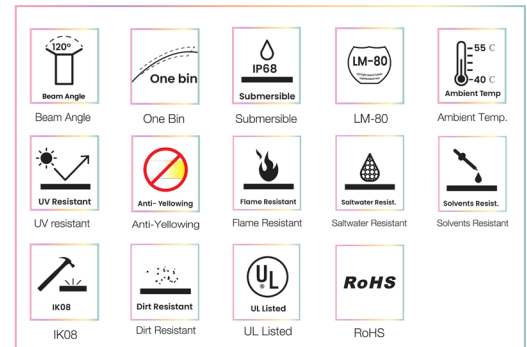
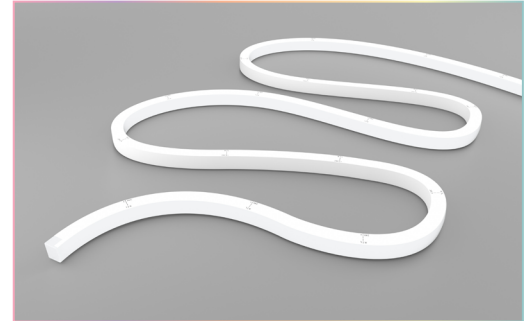


1800K-6500K

SPECIFICATIONS

LED Quantity	120 LEDs/M
Color /CCT	1800K + 6500K
Chip	Epistar SMD2835
CRI	>90
Luminous Flux per Meter	263 Lm + 294 Lm
Beam Angle	120°
Power Rating per Meter	12W
Input Voltage	24V
Housing Material	Eco PVC or Silicone
Minimum Bend Diameter	120mm
IP Rating	IP68 Wet location submersible <2m
Operating Temperature Range	-40°C to 55°C
Compatible Decoders	Use SRPC 2108-24V-200, SR-2108A-M5, or SR-2108B-M24 driver/decoder & DMX-KP-512
Certificate	RoHS, UL Listed
Lifespan	50,000 hrs
Warranty	7 years

MODEL CODES	DESCRIPTION
TAPE-120-NF16-18-65K-IP68	Neon 16 Flexible Tape, 1800K + 6500K, 12W/M, 120 LED pcs/M, 294lm/M, CRI-RA90, 120 LEDs/M, Width 16.5mm, Height 16.5mm, 24V, IP68



APPLICATIONS

- Outlining Facade of buildings
- Cove lighting
- Linear Lighting
- Signage
- Decorative lighting

* All Neon Tapes are sold by meter.

www.colorbeamlighting.com

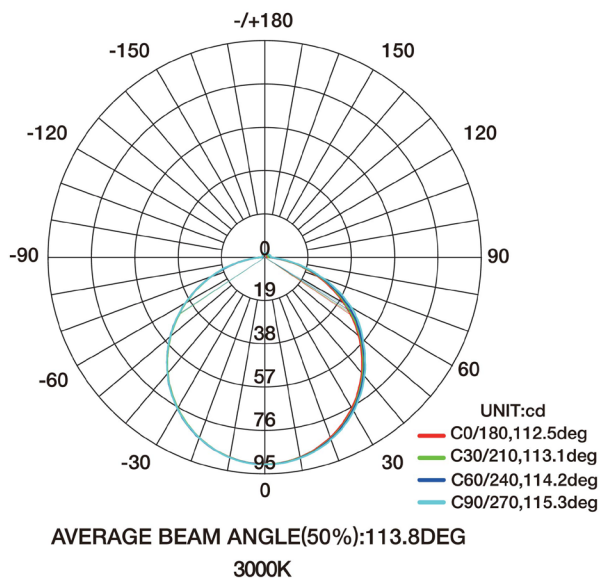


SPECIFICATION SHEET

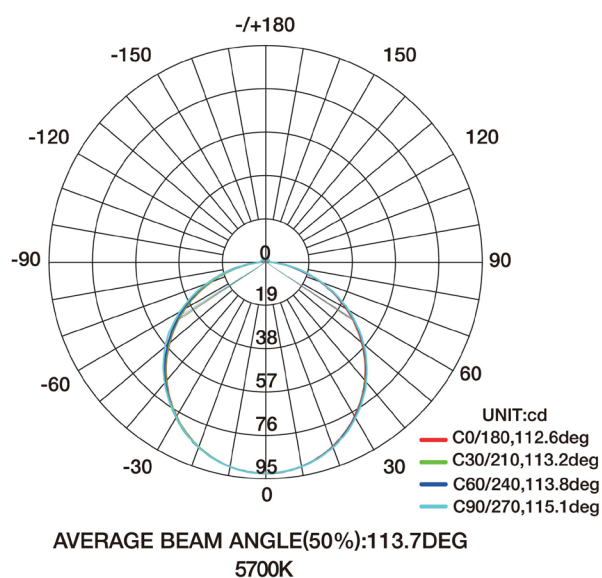
TAPE-120-NF16-BI

PHOTOMETRIC INFORMATION

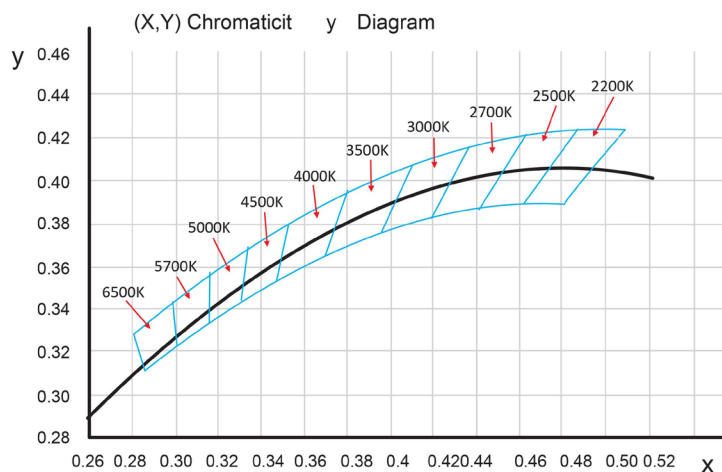
COLOR TEMPERATURE / 1800K



COLOR TEMPERATURE / 6500K

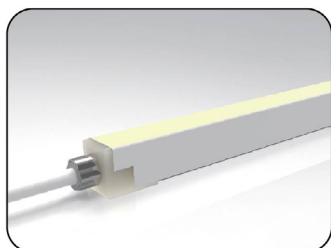


White Color Charts

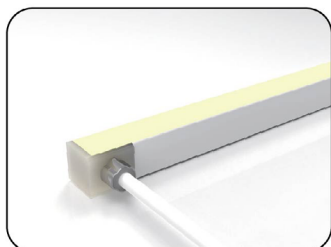
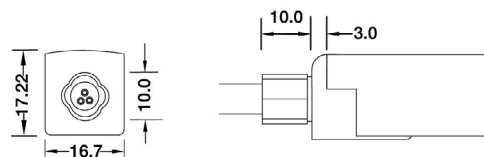


www.colorbeamlighting.com

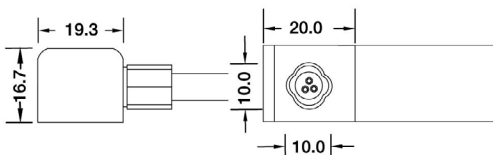
CONFIGURATION AND ACCESSORIES



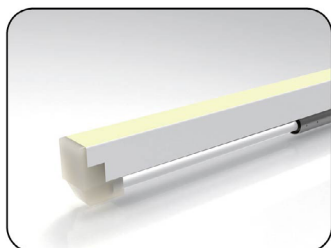
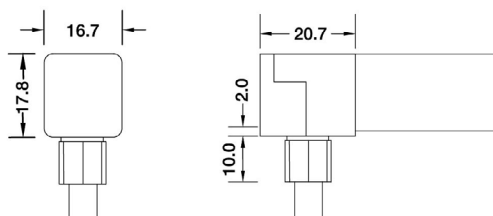
Direct Entry Connector
 MJ-SF16-DW-D01/02/03
 MJ-SF16-DW-D01SM
 MJ-SF16-DW-D02SF
 MJ-SF16-DW-D03SFM



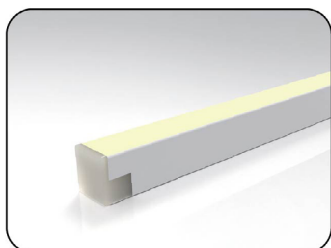
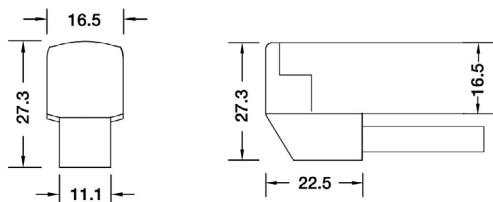
Side Entry Connector
 MJ-SF16-DW-S01/02/03
 MJ-SF16-DW-S01SM
 MJ-SF16-DW-S02SF
 MJ-SF16-DW-S03SFM



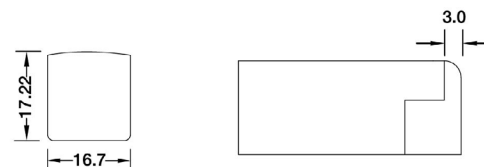
Bottom Entry Connector
 MJ-SF16-DW-B01/02/03
 MJ-SF16-DW-B01SM
 MJ-SF16-DW-B02SF
 MJ-SF16-DW-B03SFM



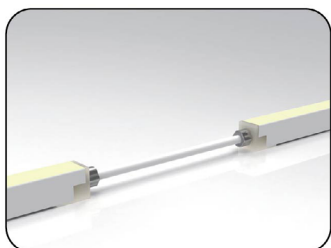
L Shape Entry Connector
 MJ-SF16-DW-L01/02/03
 MJ-SF16-DW-L01SM
 MJ-SF16-DW-L02SF
 MJ-SF16-DW-L03SFM



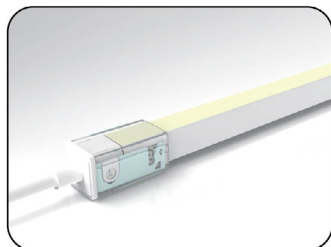
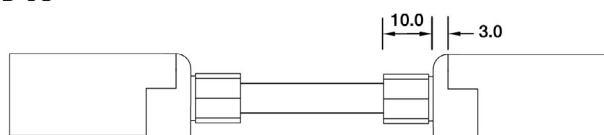
End Cap



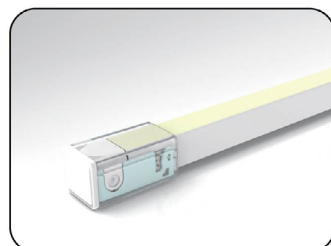
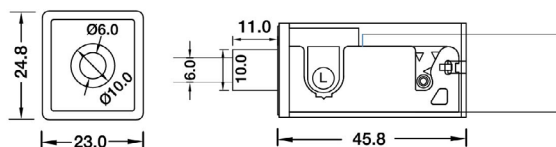
CONFIGURATION AND ACCESSORIES



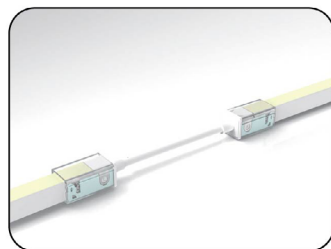
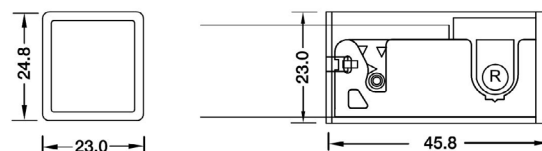
Jumper
MJ-SF16-DW-D-JC



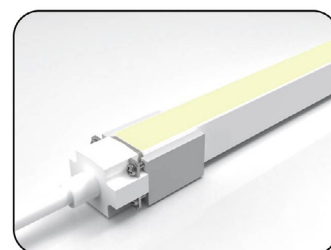
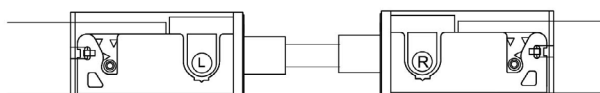
DIY Snap Connector
DIY-SN-FR-16-D-01/02-D3



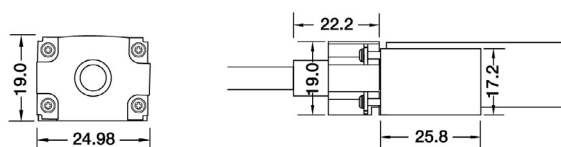
DIY Snap End Cap
DIY-SN-END-16-D-01/02



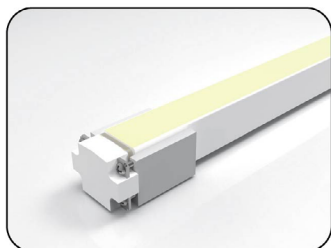
DIY Snap Connector Jumper
DIY-SN-EXT-16-DW



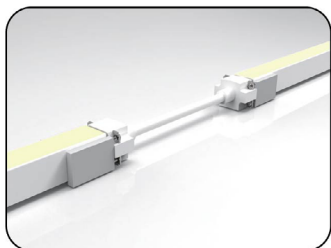
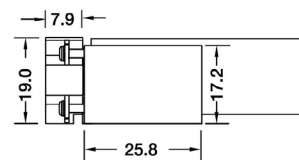
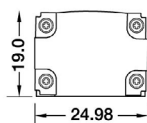
DIY Screw Connector
DIY-SC-FR-16-D-01/02-D3



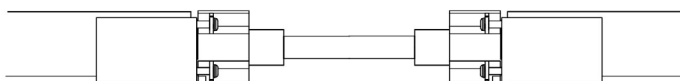
CONFIGURATION AND ACCESSORIES



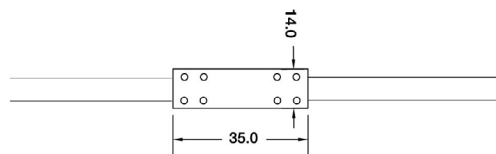
DIY Screw Connector
DIY-SC-END-16



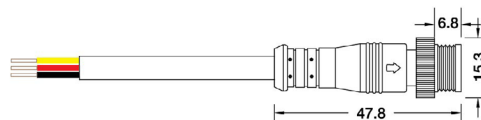
DIY Screw Extension Connector
DIY-SC-EXT-16-D3



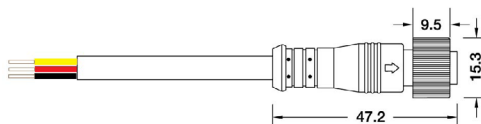
Waterproof Interrupter



Male Connector
SYZ-M12-M-3C-05-W

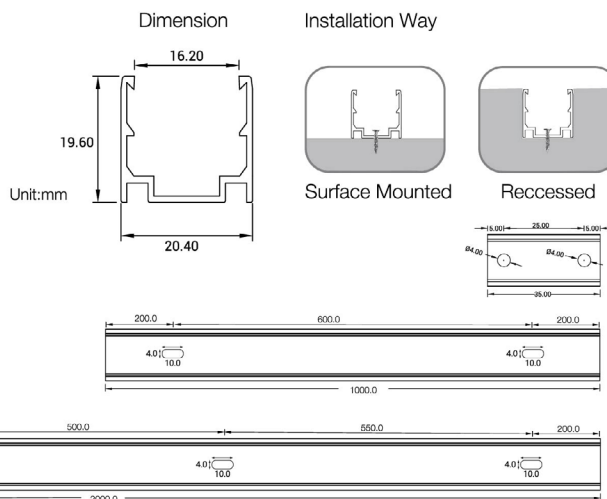


Female Connector
SYZ-M12-F-3C-05-W

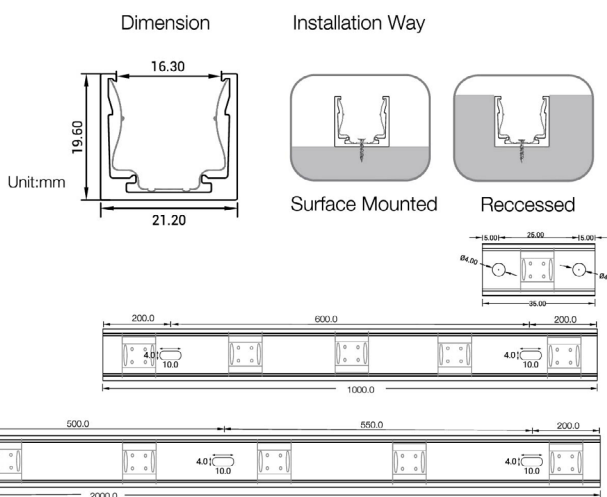
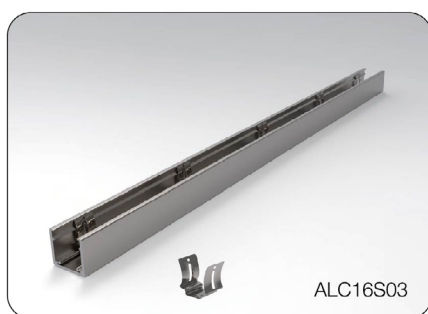


LED LINEAR FLEX MOUNTING CHANNEL

1. Aluminum Channel

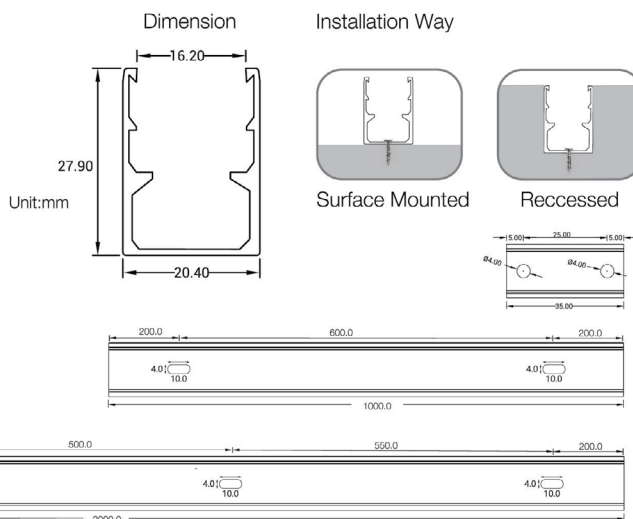
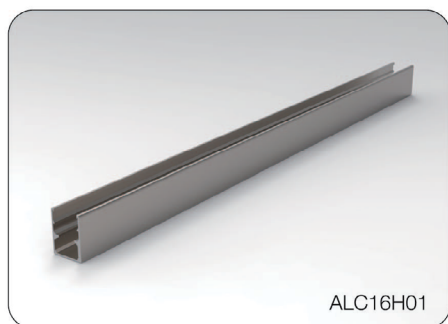


Model	W x H(mm)	Standard Length	Screw Holes	Holes Numbers	Suitable Product
ALC16S02-035	20.4*19.6	35mm	Φ4.0mm	2	F16, SF16
ALC16S02-100		1000mm	4.0x10mm	2	F16, SF16
ALC16S02-200		2000mm	4.0x10mm	4	F16, SF16

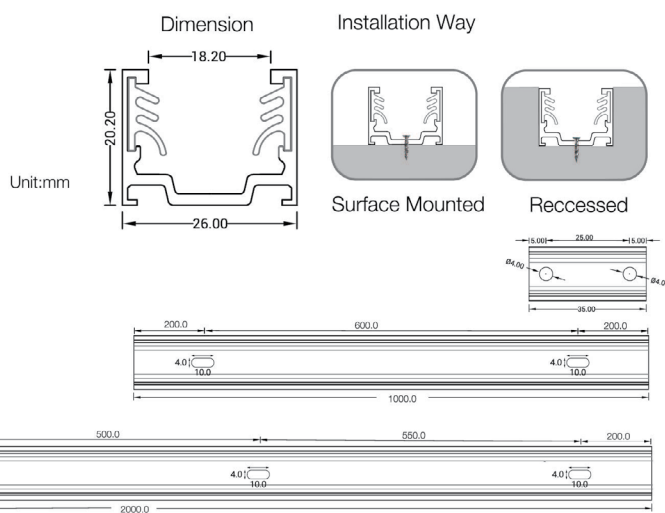
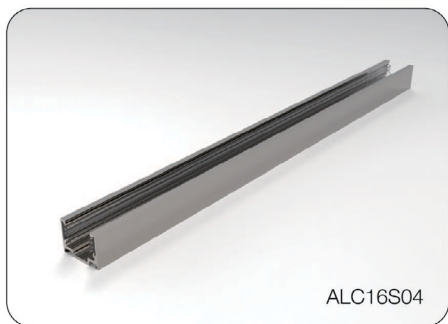


Model	W x H(mm)	Standard Length	Screw Holes	Holes Numbers	Clips	Suitable Product
ALC16S03-035	21.2*19.6	35mm	Φ4.0mm	2	1	F16, SF16
ALC16S03-100		1000mm	4.0x10mm	2	5	F16, SF16
ALC16S03-200		2000mm	4.0x10mm	4	8	F16, SF16

LED LINEAR FLEX MOUNTING CHANNEL



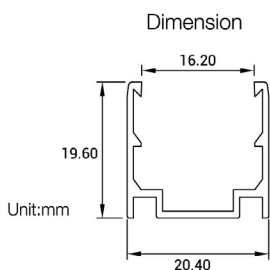
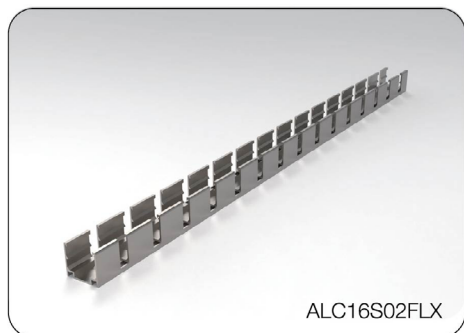
Model	W x H(mm)	Standard Length	Screw Holes	Holes Numbers	Suitable Product
ALC16H01-035	20.4*27.9	35mm	Φ4.0mm	2	F16, SF16
ALC16H01-100		1000mm	4.0x10mm	2	F16, SF16
ALC16H01-200		2000mm	4.0x10mm	4	F16, SF16



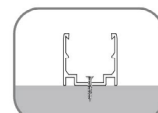
Model	W x H(mm)	Standard Length	Screw Holes	Holes Numbers	Clips	Suitable Product
ALC16S04-035	26.0*20.2	35mm	Φ4.0mm	2	2	F16, SF16
ALC16S04-100		1000mm	4.0x10mm	2	2	F16, SF16
ALC16S04-200		2000mm	4.0x10mm	4	2	F16, SF16

LED LINEAR FLEX MOUNTING CHANNEL

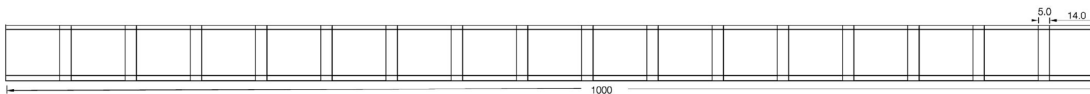
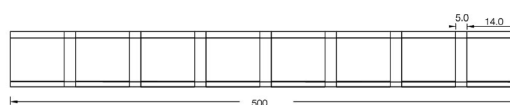
2. Flexible Aluminum Channel



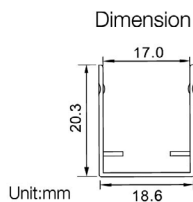
Installation Way



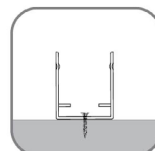
Surface Mounted



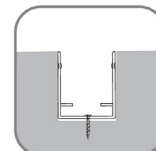
Model	W x H(mm)	Standard Length	Suitable Product
ALC16S02FLX-05	20.4*19.6	500mm	F16, SF16
ALC16S02FLX-10		1000mm	F16, SF16



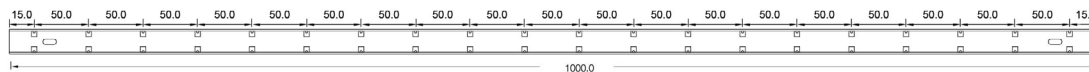
Installation Way



Surface Mounted

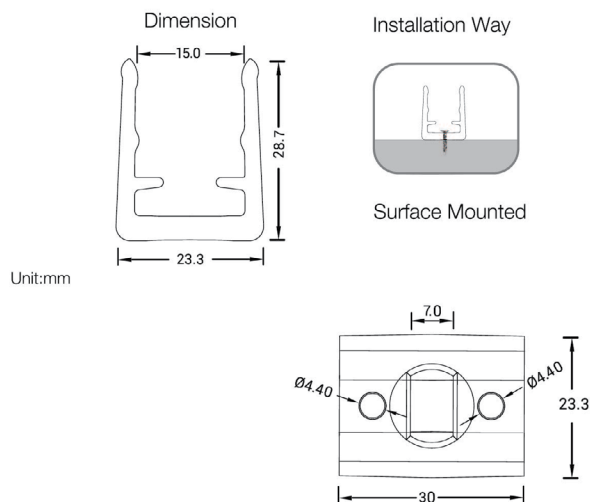
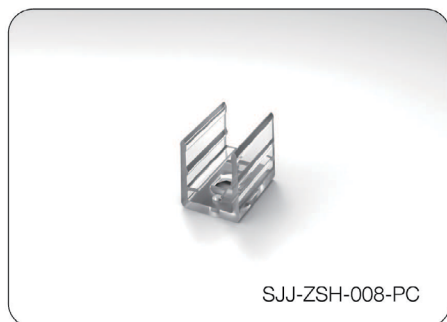


Recessed

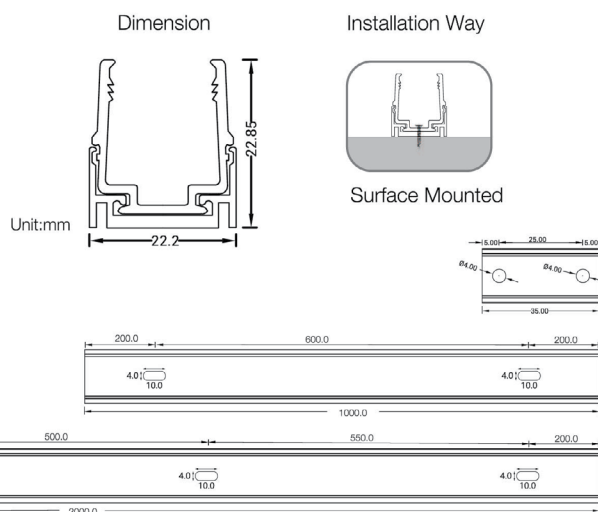
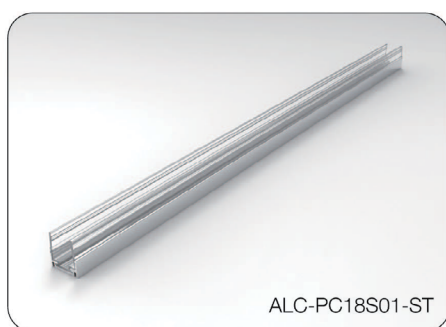


Model	W x H(mm)	Standard Length	Screw Holes	Holes Numbers	Suitable Product
SSC16S02-100	18.6*20.3	1000mm	□4.0x10mm	2	F16, SF16

LED LINEAR FLEX MOUNTING CHANNEL



Model	W x H(mm)	Standard Length	Screw Holes	Holes Numbers	Suitable Product
SJJ-ZSH-008-PC	23.3*28.7	30mm	Φ4.40mm	2	F16, SF16



Model	W x H(mm)	Standard Length	Screw Holes	Holes Numbers	Suitable Product
ALC-PC18S01-ST-035	22.2*22.85	35mm	Φ4.0mm	2	F16, SF16
ALC-PC18S01-ST-100		1000mm	4.0x10mm	2	F16, SF16
ALC-PC18S01-ST-200		2000mm	4.0x10mm	4	F16, SF16



SPECIFICATION SHEET

TAPE-120-NF16-BI

COMPATIBLE PROCESSOR & CONTROLLERS

GATEway 1DMX



Lighting processor integrated with a configurable software, 1 DMX output, 1 universe controlling 512 DMX addresses, 5VDC, 1A output.

DMX-KP-512



The DMX-KP-512 control panel is a master controller designed to control the DMX controllers.

DRV-SRPC2108-24-200CVF



DMX driver, 4 channels, 24VDC, 200W built-in power supply, constant Voltage, 100-240VAC input, 4x2A output.

*Compatible with white, bi-white, RGB, and RGBW luminaires.

SR-2108A-M5-5



DMX decoder, 5 channels, VDC, Constant Voltage
Require an external VDC power supply, available from 96W to 320W, 12-24VDC input, 5x8A output.

*Compatible with white, bi-white, RGB, and RGBW luminaires.

SR-2108B-M24-5



DMX decoder, 24 channels, VDC, Constant Voltage.
Require an external VDC power supply, available from 96W to 320W, 12-24VDC input, 24x4A output.

*Compatible with white, bi-white, RGB, and RGBW luminaires.