

### FEATURES

- Material: anodized aluminum 6063
- Width of suitable LED tape: Max 16mm
- Installation of cover: Press into profile
- Profile length: 1 meter and 2 meters
- Cover material: PMMA , PC
- Opal cover



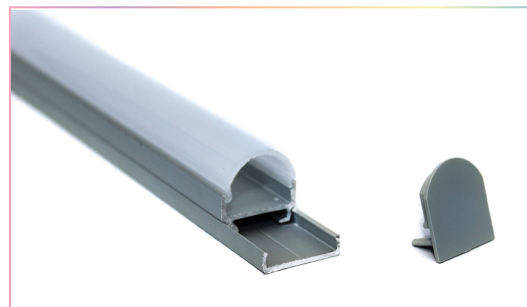
### PRODUCT CODES & COMPATIBLE ACCESSORIES

MODEL	DESCRIPTION
<b>1 Meter</b>	
<b>TRACK-OP-010-1M</b>	Aluminum Profile - 1M
<b>2 Meters</b>	
<b>TRACK-OP-010-2M</b>	Aluminum Profile - 2M
<b>Accessories</b>	
<b>CVR-OP-010/036-1M</b>	Diffuser for TRACK-OP-010 & TRACK-OP-036-1M
<b>CVR-OP-010/036-2M</b>	Diffuser for TRACK-OP-010 & TRACK-OP-036-2M
<b>TR-ENDCAPS-010</b>	End Caps 010 (2 Pack)

### LED LINEAR TRACKS

TRACK-OP-010-1M

TRACK-OP-010-2M



ALUMINUM TRACK AND DIFFUSER

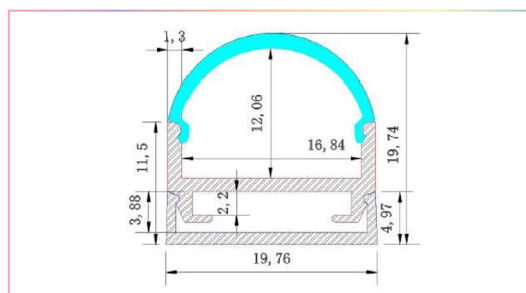
### LED LINEAR ACCESSORIES

TR-ENDCAPS-010



ACCESSORIES/END CAPS

### TRACK DIMENSIONS



## TAPE COMPATIBILITY CHART

### FULLY DIFFUSED



#### COMPATIBLE TAPES

TAPE-COB-W30K  
TAPE-COB-DW  
TAPE-COB-BI  
TAPE-COB-RGBW

### PARTIAL DIFFUSION



#### COMPATIBLE TAPES

TAPE-60-W30K  
TAPE-60-RGB  
TAPE-60-RGBW  
TAPE-120-BI  
TAPE-180-RGB+WW

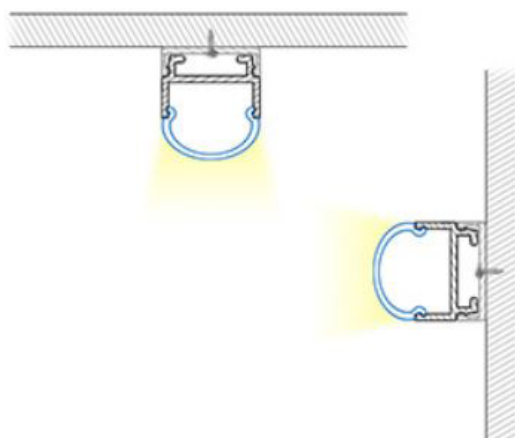
### MINIMAL DIFFUSION



#### COMPATIBLE TAPES

TAPE-30-RGB

### INSTALLATION VIEW



### TYPICAL APPLICATIONS

- Cupboards
- Storage shelves
- Furniture lighting
- Exhibition lighting

### ADVANTAGES

- Specifically designed as mounted light bars
- Aluminum material can achieve a better cooling effect